



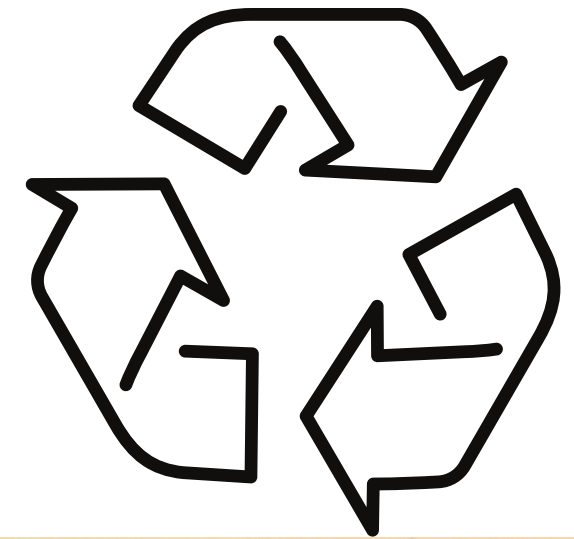
Student Ambassador Programme

WORKSHOP 5

WASTE AND RESOURCE USE

**NATURE
POSITIVE
BY 2030**

24TH APRIL 2026/ IPM BST



Credit: Bournemouth University, UK



Credit: HariPriya Shanmugam, The University of Manchester, UK




Credit: Abomey-Calavi University, Benin



Housekeeping



- Please turn on your camera if you feel able to, introduce yourself in the chat and ask questions as we go along - we'd love to make this as interactive as possible
- Simultaneous translation - French and Spanish - please use the globe icon to select your language. 
- The workshop is being recorded and the recording will be made available to watch back afterwards
- We will be having breakout groups later in the workshop
- We'll be looking to reach out to several of you to invite you to speak briefly in workshop 6 in May, based on the information you provided in your applications



Agenda:



Welcome and exploring this month's topic: the Conservation Hierarchy and actions for your campus around waste and resource use



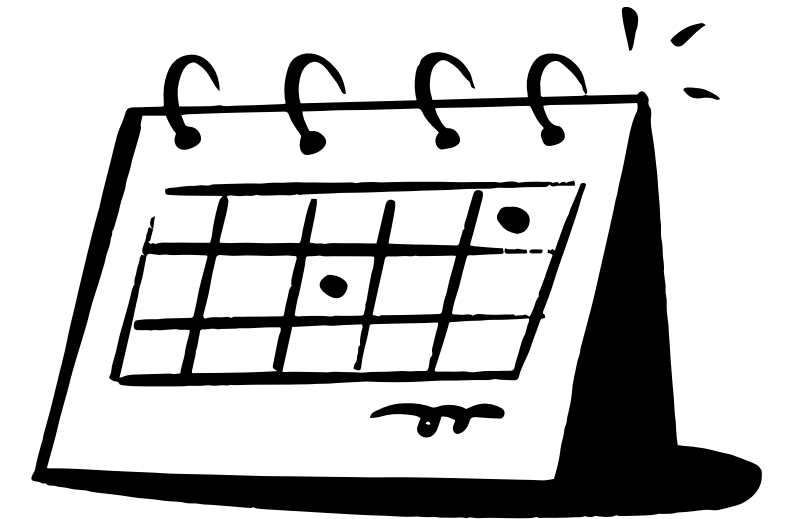
Group exercise in breakout groups - ideas and examples for tackling waste: individual, campus/community and society



Student experiences - presentations and Q&A



Summary of next steps - workshop quiz, toolkit and final workshop



NPU Student Ambassador team



NATURE POSITIVE
UNIVERSITIES



Emily Stott
NPU Coordinator
University of Oxford



Favour Eragbie
Student Ambassador Coordinator
Youth for Environmental Conservation



Avani Jyani
Student Ambassador Coordinator
Familial Forestry India



Hollie Thompson
NPU Project Assistant
University of Oxford



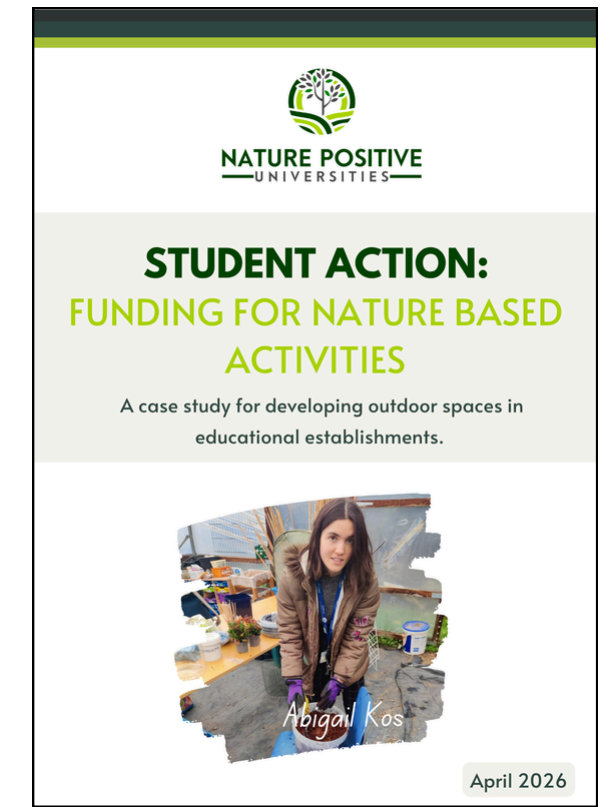
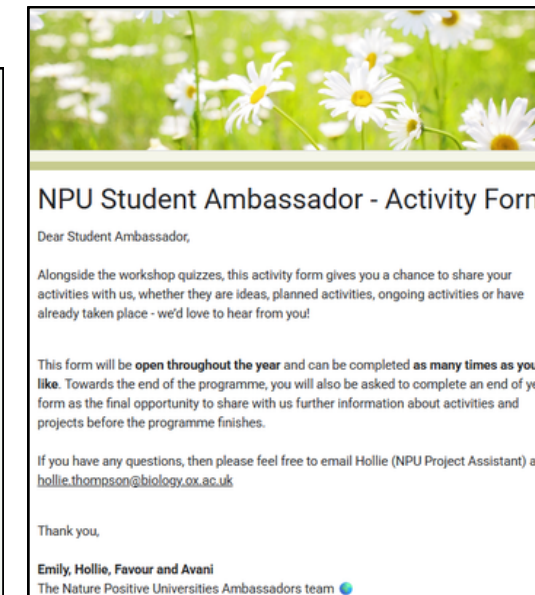
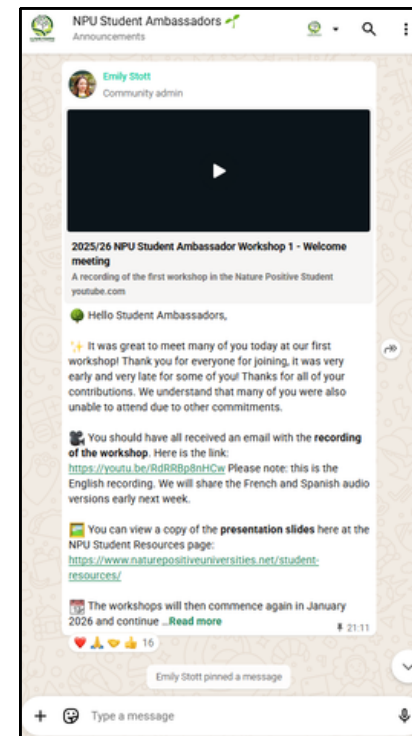
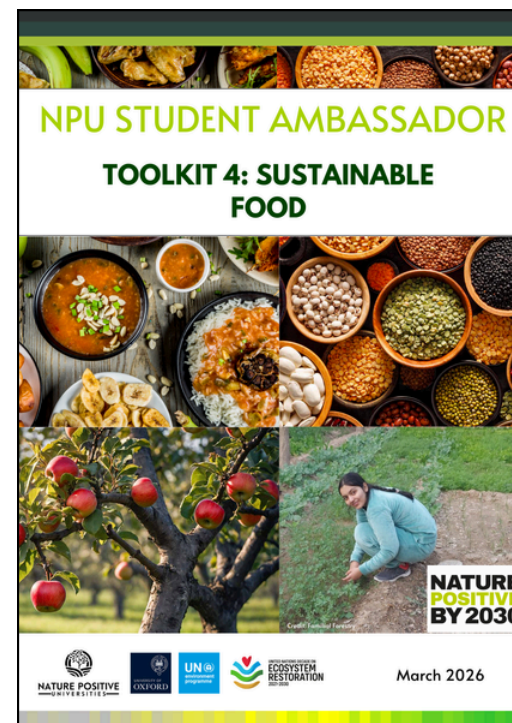
Contact: Please use email (not WhatsApp) if you need to contact us!

emily.stott@biology.ox.ac.uk

hollie.thompson@biology.ox.ac.uk

naturepositiveuniversities@gmail.com

Recap: Ambassador programme resources



Green Skills workshops

Action Toolkits

WhatsApp group

Workshop quizzes

Activity form

Student resources webpage



Waste & Resource use



Pollution touches all parts of Earth and is one of the 5 direct drivers of ecosystem degradation



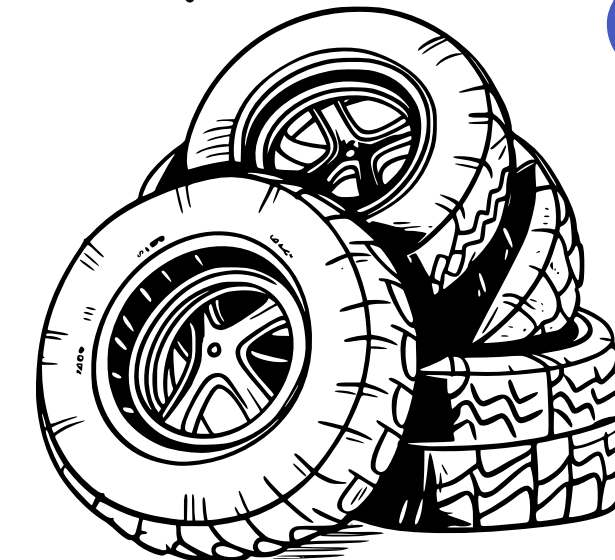
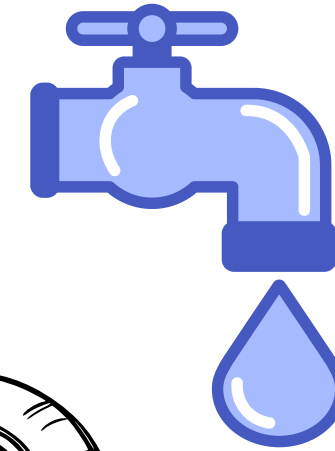
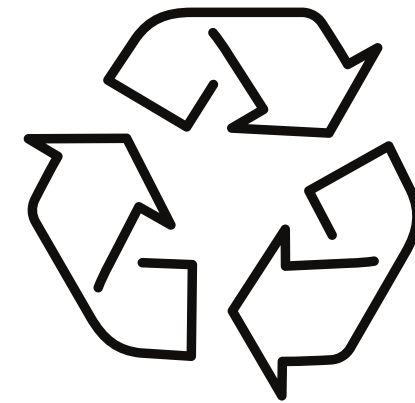
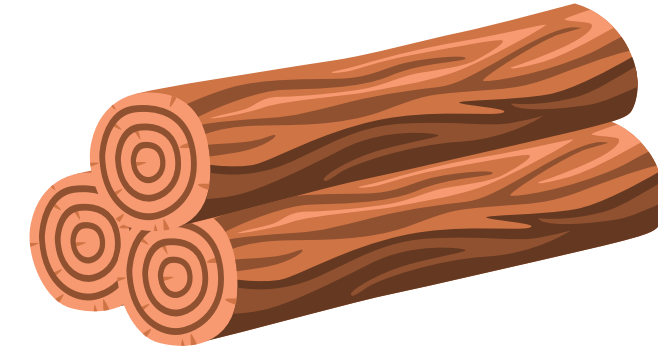
It is the largest environmental cause of disease and major risk factor for premature death in the world



Humanity produces 2.1 billion tonnes of waste every year



Shifting to cleaner industries and economies built on circular approaches is possible and can bring benefits to health, prosperity and ecosystem health



Waste & Resource use



NATURE POSITIVE
UNIVERSITIES

If everyone lived like you, we would need

2.6 Earths 



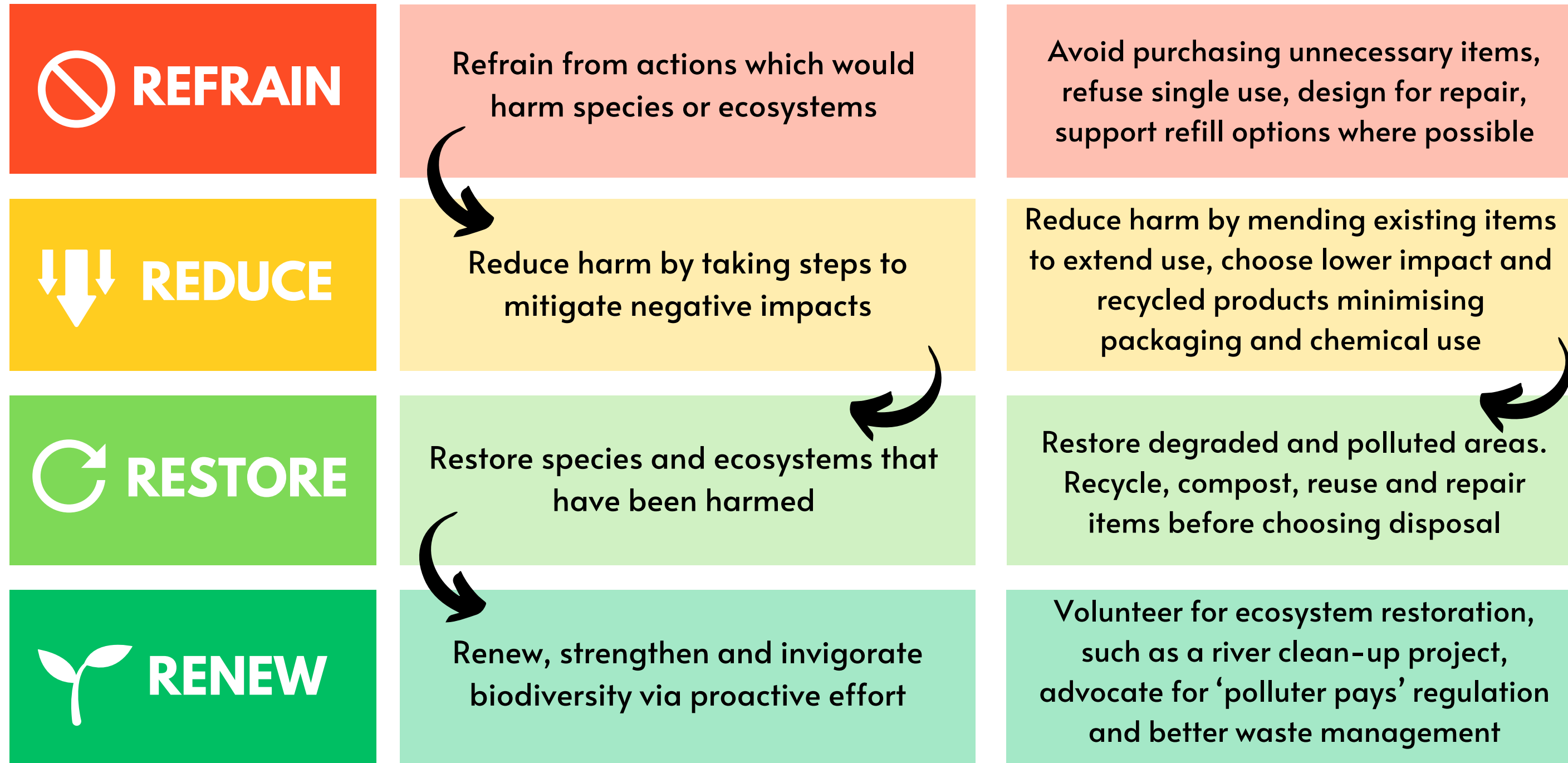
- Overconsumption
- Carrying capacity of planet
- We need new ways of thinking and designing products we use
- We need wiser ways to use our natural resources



Conservation Hierarchy



NATURE POSITIVE
UNIVERSITIES

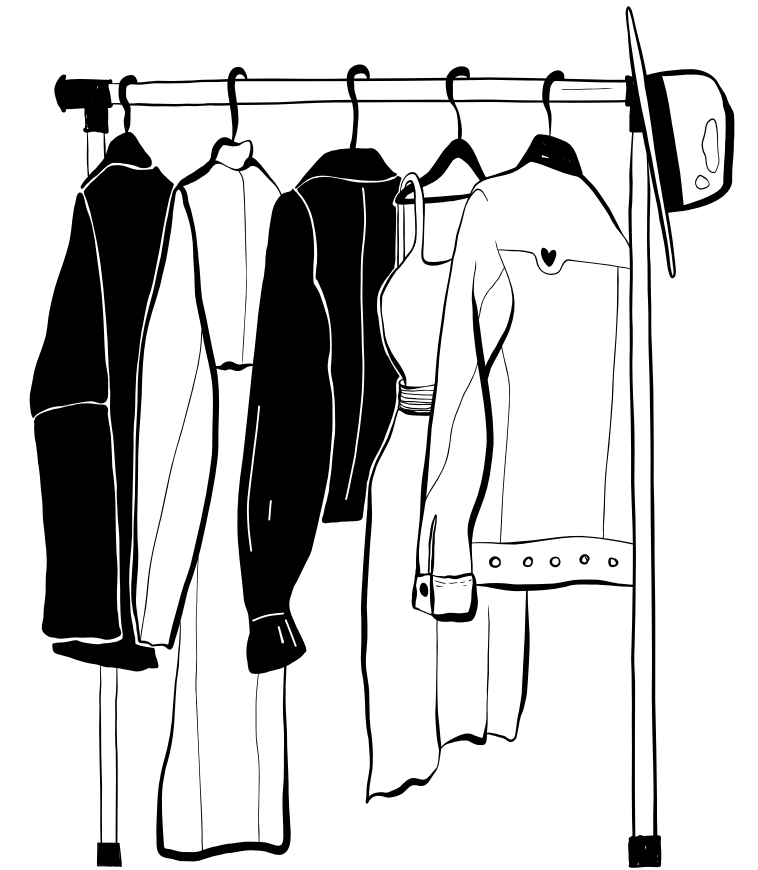


Example: fashion/textile choices

Target: Reduce the environmental and social impact of my fashion/textile purchases as much as possible



Refrain	Avoid purchasing unnecessary items. Avoid purchasing the most environmentally and socially damaging products, such as cow leather, high-pesticide/high-water use cotton, and products made in sweatshops.
Reduce	Minimise the impact of fashion items that are purchased, by only purchasing from companies with socially and environmentally responsible supply chains. Wash clothes only when necessary, at low temperatures, using environmentally-friendly detergent. Mend items rather than purchasing new ones.
Restore	Recycle clothes into new items (e.g. cut down trousers to shorts), set up a clothes exchange, or take unused items to a charity shop or a fabric recycler so they can be used again.
Renew	Donate time or money towards a river clean-up project, to restore or improve resilience of waterways to pollution from detergents and micro-plastics. Encourage others to adopt '4 steps' actions, and refrain from fast fashion. Advocate for better regulation of the fashion industry and waste management.



Mitigation Hierarchy of Waste



NATURE POSITIVE
UNIVERSITIES

Many similar frameworks exist, also based on the **Mitigation Hierarchy** to help prioritise waste management strategies



Circular economy

By avoiding creation of **'waste'** in the first place and using natural resources wisely, we can find creative solutions and move towards circular systems creating healthier societies and ecosystems

LINEAR
ECONOMY



RECYCLING
ECONOMY



CIRCULAR
ECONOMY



Workshop 5 Actions:

This month's task is flexible: we'd like you to **explore and share** with us in the workshop quiz/ in an activity form any initiatives related to waste, resource use and circular economy that are already happening at your institution OR **think about or plan a project** you could work on related to this topic, such as awareness posters mentioned earlier.



We'd love to feature your Case Studies on the NPU website. We need a **title, 150 words, a photo, and a URL** (if available) with a link to a website / post with more information. We will also be happy to feature these in this month's Toolkit.

www.naturepositiveuniversities.net/case-studies



Case Studies

Filter by keyword

- Student action (31)
- Action (27)
- Land (20)
- Outreach (20)
- Ecological monitoring (11)
- Citizen science (9)
- Baseline - Campus grounds (7)
- Waste (6)
- Research (3)
- Conservation
- Hierarchy (2)

See 4 more

Filter by location

- Asia (10)
- Europe (6)
- North America (5)



Student-Led Plastic Recycling Workshop at Institut National Polytechnique Félix Houphouët Boigny

On January 18, 2024, the RANE (Réseau des Ambassadeurs de la Nature à l'École) student network at the Institut National Polytechnique Félix Houphouët-Boigny (INP-HB) in Côte d'Ivoire hosted a hands-on plastic waste recycling workshop. The event brought together 27 participants, including students, a teacher, and members of RANE, with the objective of raising awareness and building practical skills around



Grow Green, Grow Bangladesh – Tree Planting with IUB Planters

As part of a mission to make the campus greener and raise climate awareness, the student-led team, IUB Tree Planters, launched the "Grow Green, Grow Bangladesh" initiative at Independent University, Bangladesh (IUB). The team planted around 100 native trees across the campus with support from around 25 students and faculty members. The goal was to engage the university community and inspire long-term environmental responsibility. This small but meaningful step helped create a stronger

Group exercise - breakout groups

You will have 10 minutes in breakout groups

Share any ideas and examples for tackling waste and resource use that you've heard of or have been part of at your institution or in your locality:

- Group 1 will consider **individual actions** - for example taking a reusable bag shopping
- Group 2 will consider **campus or community actions** - for example setting up swap shops
- Group 3 will consider **society actions** - for example introduction of new regulations or policies



- Automatically assigned one of three groups
- Please use the chat, if you're not able to unmute

Sharing experiences of waste and resource use actions



Amensinor Favour Okpohs,
Student Ambassador, Ulster University, UK



Monika Dadhich & Varushi
Student Ambassador, Indraprastha College For Women, University of Delhi, India



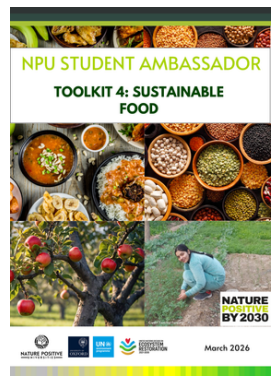
Laura Sofía Ávila, Santiago Figueroa Soto & Federico Teran Pascuas,
Student Volunteers, Pontificia Universidad Javeriana Cali, Colombia

q
u
e
s
t
i
o
n
s

Next steps:



Complete the **workshop quiz** - link will follow by email and in WhatsApp.



We will email with a link to download **the slides, recording of this session, Toolkit 5: Waste and resource use**. These will also be added to the **Student Resources page**.



Continue to check WhatsApp group: share your progress and any questions.



Sixth and final workshop date and topic:

- **May 29th:** Advocacy and community engagement



City Nature Challenge 24-27th April



NATURE POSITIVE
UNIVERSITIES

Join the world's largest Bioblitz!
April 24th-27th 2026

Photo: Django Wright

How to Join THE CITY NATURE CHALLENGE

YOU DON'T HAVE TO KNOW ANYTHING ABOUT NATURE TO PARTICIPATE!

- 1 DOWNLOAD iNaturalist**
THE MOST FREQUENTLY USED COMMUNITY SCIENCE PLATFORM FOR THE CITY NATURE CHALLENGE (THE APP IS FREE)
- 2 FIND YOUR LOCAL NATURE**
*WILDLIFE ONLY!
AKA. NO GARDENS OR PETS
- 3 TAKE PICTURES**
(THEY DON'T HAVE TO BE FANCY)
YOU CAN USE YOUR SMARTPHONE
- 4 SHARE YOUR PHOTOS AKA "OBSERVATIONS"**
to iNaturalist
THIS GIVES SCIENTISTS & DECISION-MAKERS CRITICAL DATA ABOUT URBAN NATURE

Some of your cities are taking part:

<https://www.citynaturechallenge.org/participate>

- Abu Dhabi, UAE
- Bangkok, Thailand
- Berlin, Germany
- Birmingham, Bristol, Exeter, London, Manchester, Oxfordshire, Stoke-On-Trent etc, UK
- Brisbane, Sydney, Melbourne, Australia
- Cali, Colombia
- Cairo, Egypt
- Bhubaneswar, Delhi, Mumbai etc, India
- Istanbul, Turkey
- Montreal, Vancouver, Winnipeg, Canada
- Stellenbosch, South Africa
- Seattle, USA



If your city is not taking part - you can still join:

<https://www.inaturalist.org/projects/city-nature-challenge-2026-global-project>

Your institution might be taking place in the Campus Nature Challenge, hosted by the Campus Biodiversity Network:

<https://campusnaturechallenge.org/>

défi nature
CAMPUS
nature challenge

 campus
biodiversity
network



NATURE POSITIVE —UNIVERSITIES—

#GenerationRestoration